

Amazon WorkSpaces: AutoCAD Deployment Guide

Build an Amazon WorkSpaces Personal environment to host AutoCAD or AutoCAD LTE for your users

Updated November 2024

Authors: Nikhil Parekh (Sr. Solution Architect) and Vijay Kumar (Solutions Architect)

<https://aws.amazon.com/workspaces-family/workspaces/features/personal/>

Before You Begin

- You must have an AWS account to create or administer a WorkSpace. Users do not need an AWS account to connect to and use their WorkSpaces. For information about how to sign up for and activate an AWS account, see [How to Create an Account](#).
- When you launch a WorkSpace, you must select a GraphicsPro.G4dn bundle to meet the minimum hardware requirements to run AutoCAD. For more information, see [System requirements for AutoCAD 2025 including Specialized Toolsets](#).
- AutoCAD is supported on 64-bit Microsoft Windows 11 and Windows 10 version 1809 or above. In order to run these versions of Windows in WorkSpaces, you must create a custom image using the [Bring Your Own License \(BYOL\)](#) process.
- By default, the maximum number of GraphicsPro.g4dn WorkSpaces in an account in an AWS Region is zero. For more information on submitting a quota increase request, see [Amazon WorkSpaces quotas](#).
- Amazon WorkSpaces is available in select AWS Regions. Verify the supported Regions and select a Region for your WorkSpaces. For more information about the supported Regions, see [AWS Service by Region](#).
- See the [Autodesk Virtualization policy](#) for information on eligible AutoCAD purchase plans and technical support.

Contents

- Before You Begin..... 2
- Step 1: Launch the WorkSpace 4
- Step 2: Connect to the WorkSpace 6
- Step 3: Install AutoCAD 8
- Appendix: Additional resources..... 11

Step 1: Launch the WorkSpace

Using Quick Setup, you can launch your first WorkSpace in minutes.

As stated in the *Before you Begin* section, AutoCAD is supported on 64-bit Microsoft® Windows® 11 and Windows 10 version 1809 or above. In order to run these versions of Windows in Amazon WorkSpaces, you need to create a custom bundle/image using the [Bring Your Own License\(BYOL\)](#) process.

To launch a WorkSpace

1. Sign in to the AWS Management Console and open the Amazon WorkSpaces console at <https://console.aws.amazon.com/workspaces/>.
2. On the **Amazon WorkSpaces** main page, choose **Quick setup**.

The screenshot shows the 'Create WorkSpaces' page in the AWS Management Console. On the left, there is a dark blue banner with the text 'End User Computing', 'Amazon WorkSpaces', 'High performance fully managed cloud desktops streamed over the internet', and a brief description of the service. On the right, the 'Create WorkSpaces' section is visible, featuring a 'Quick setup' option with a description and a 'Quick setup' button, and an 'Advanced setup' option below it.

3. In **Step 1 - Create Users**, choose **Create additional user** and enter the **Username**, **First Name**, **Last Name**, and **Email**, then choose **Next**.

The screenshot shows the 'Create Users' step in the AWS Management Console. The breadcrumb trail is 'Amazon WorkSpaces > WorkSpaces > Get Started'. The page title is 'Create Users' with an 'Info' link. Below the title, it says 'Add up to 5 users to your WorkSpaces.' The main content area is titled 'Users' and contains a table with four columns: 'Username', 'First name', 'Last name', and 'Email'. Each column has a text input field and a small error message below it. The 'Username' field contains 'johnd' and the error message is 'Must contain alphanumeric and/or numeric characters.' The 'First name' field contains 'John' and the error message is 'Must contain alphanumeric and/or numeric characters.' The 'Last name' field contains 'Doe' and the error message is 'Must contain alphanumeric and/or numeric characters.' The 'Email' field contains 'johnd@example.com' and the error message is 'Must be a valid email address.' There is a 'Remove' button to the right of the email field. Below the table is a 'Create additional user' button and a note that says 'You can add 4 more users.' At the bottom right of the page, there are 'Cancel' and 'Next' buttons.

4. In **Step 2 – Select Bundle**, select the custom bundle that you created using the BYOL process, then choose **Next**.

Amazon WorkSpaces > WorkSpaces > Get Started

Step 1
[Create Users](#)

Step 2
Select Bundle

Step 3
Review

Select Bundle Info

All Amazon Linux bundles come with Firefox, LibreOffice, Evolution, Python, and more. All Windows bundles come with Internet Explorer 11 and FireFox. You can install your own applications and packages on your WorkSpaces after it has launched.

Value	Standard	Performance	Power	PowerPro	GPU enabled
	Graphic design	Run AI/ML programs	3D rendering	3D visualizations	
Graphics.g4dn	GraphicsPro	GraphicsPro.g4dn			
Computing power 4 vCPU	Computing power 16 vCPU	Computing power 16 vCPU			
Graphic computing 1 vGPU	Graphic computing 1 vGPU	Graphic computing 1 vGPU			
Memory / Video memory 16 GiB / 16 GiB	Memory / Video memory 122 GiB / 8 GiB	Memory / Video memory 64 GiB / 16 GiB			

GPU enabled bundles (1) Info Refresh View Details

Filter bundles Filter owner Filter operating system

Filter protocol Filter software

< 1 > Settings

	Name	ID	Language	Client protocol	Bundle type	Bundle...	Updated date	Source image
<input type="radio"/>	Windows11_G4dn	wsb-c4y7...	-	DCV (formerly WSP)	Regular	✔ Available	Monday, October 21, 2024	Windows11

Cancel Previous Next

- In **Step 3 – Review**, review your configuration and choose **Create**.
- On the confirmation page, choose **View the WorkSpaces Console**. The initial status of the WorkSpace is **Pending**. When the launch is complete, the status is **Available** and an invitation is sent to the email address that you specified for the user.

Quick Setup

Quick Setup completes the following tasks on your behalf:

- Creating an entity, called AWS Identity and access Management (IAM) role, to assign specific permissions to users. This allows trusted identities to perform actions within AWS. WorkSpaces creates a new IAM role for you (named **workspaces_DefaultRole**). You can customize this IAM role later, if needed.

- Creating a secure, isolated, virtual private cloud (VPC), which allows you to launch your WorkSpaces in a logically isolated virtual network, hosted remotely by AWS. If you already have your own AWS VPC and want to use it instead, make sure it meets the requirements noted in [Configure a VPC for WorkSpaces](#).
- Setting up a directory in the VPC, called Simple AD, to store user and WorkSpaces information. A Simple AD directory is compatible with Microsoft Active Directory and hosted on AWS.
- Creating specified AWS accounts and adding them to the directory. The first AWS account created by quick setup is your admin AWS account. You cannot update this AWS account from the WorkSpaces Console. Do not share the information for this account with anyone else.
- Creating WorkSpaces. Each WorkSpace receives a public IP address to allow internet access. The default mode is AlwaysOn, which allows users to immediately access a WorkSpace anytime they log in. The running mode of a WorkSpace determines its immediate availability and how you pay for it (monthly or hourly). You can choose between the AlwaysOn and AutoStop (see [Manage the WorkSpace running mode for details](#)).
- Sending invitation emails to the specified users. Users then log in to their account using the instructions provided in their invitation email.

Step 2: Connect to the WorkSpace

Users will receive a welcome email with instructions to set up a WorkSpaces account, set up a WorkSpaces client, and get started with their virtual desktop. Users will need to download the [Amazon WorkSpaces client application](#) to access their WorkSpaces.

Note

When you are connected to your WorkSpace from a Windows or MacOS client, you can toggle the fullscreen display by using following command shortcuts:

- Windows client: **Ctrl+Alt+Enter**
- MacOS client: **Control+Option+Return**

To connect to the WorkSpace

1. If you haven't set up credentials for the user already, open the link in the invitation email and follow the directions. Remember the password that you specify as you will need it to connect to your WorkSpace.

Note that passwords are case-sensitive and must be between 8 and 64 characters in length, inclusive. Passwords must contain at least one character from three of the following categories: lowercase letters (a - z), uppercase letters (A - Z), numbers (0 - 9), and the set ~!@#\$%^&* _ - += ` | \ () { } [] : ; " ' < > , . ? / .

Please set your my-example-directory credentials

johnd

John

Doe

johnd@example.com

Password ⓘ

Repeat Password

Update User

2. When prompted, download one of the client applications. For more information about the requirements for each client, see [Amazon WorkSpaces Clients](#) in the *Amazon WorkSpaces User Guide*.

If you aren't prompted and you haven't installed a client application already, open <https://clients.amazonworkspaces.com> and follow the directions.

3. Start the client, enter the registration code from the invitation email, and choose **Register**.

amazon WorkSpaces

Enter a new registration code or select one from the dropdown.

SLiad+ [blacked out] ▼

Register

Did you know you could name your WorkSpaces? Go to Settings > Manage Login Information.

4. When prompted to log in, enter the username and password, and then choose **Sign In**.



Please log in with your WorkSpaces credentials

Sign In

[Forgot Password?](#)

Keep me logged in

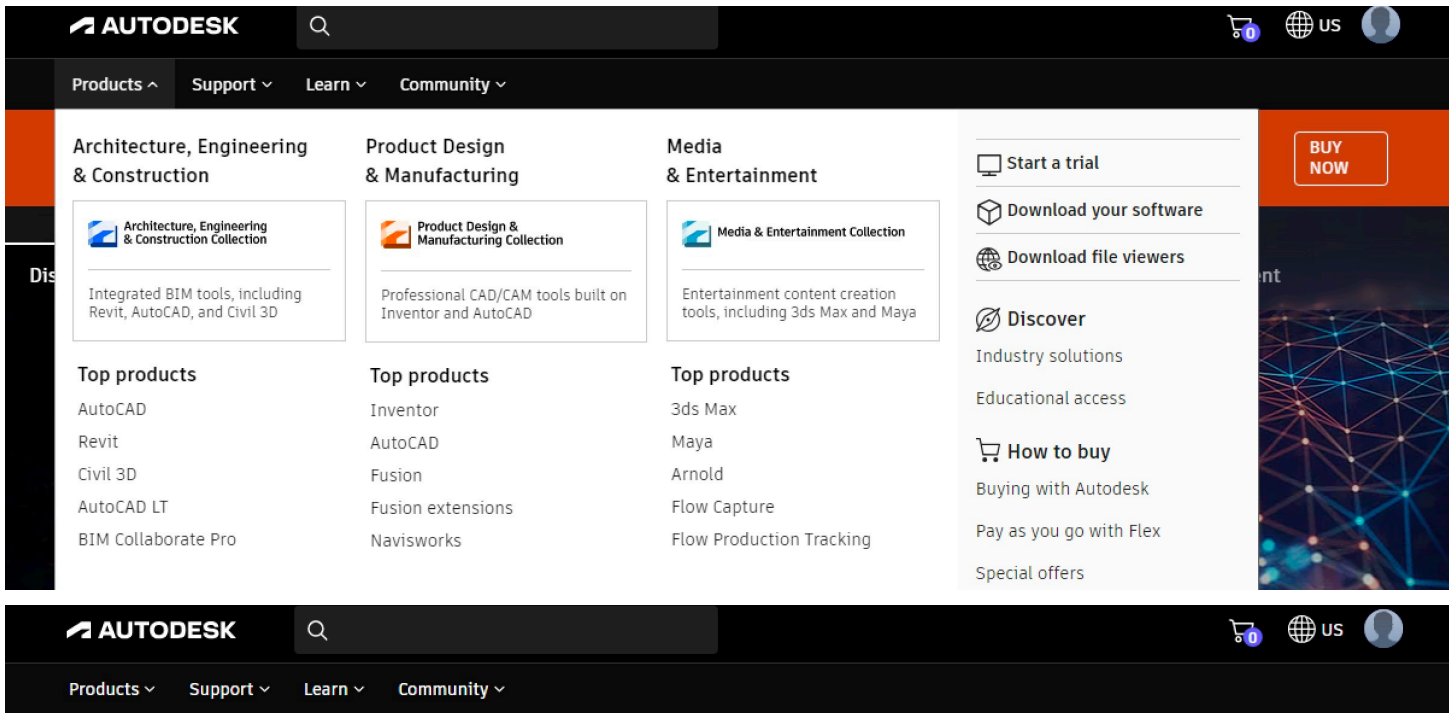
[Change Registration Code](#)

Access your desktop anywhere, anytime,
from any device

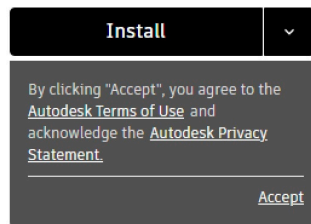
Step 3: Install AutoCAD

Install AutoCAD

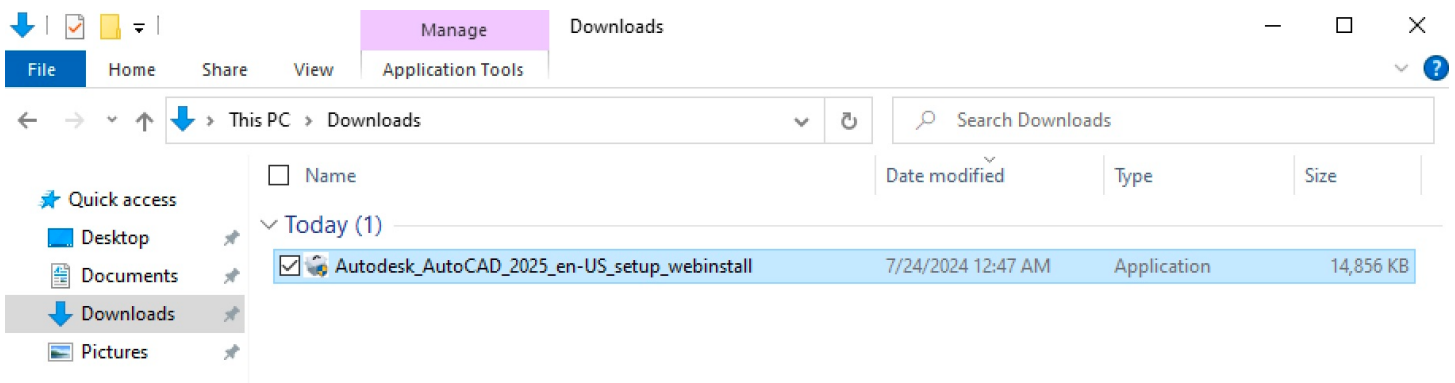
1. From a browser within your WorkSpace, navigate to the [Autodesk Accounts portal](#). From the **Products** dropdown menu, choose **AutoCAD**. Choose **Install** and accept the terms and conditions from the browser pop-up to download the AutoCAD installation file.



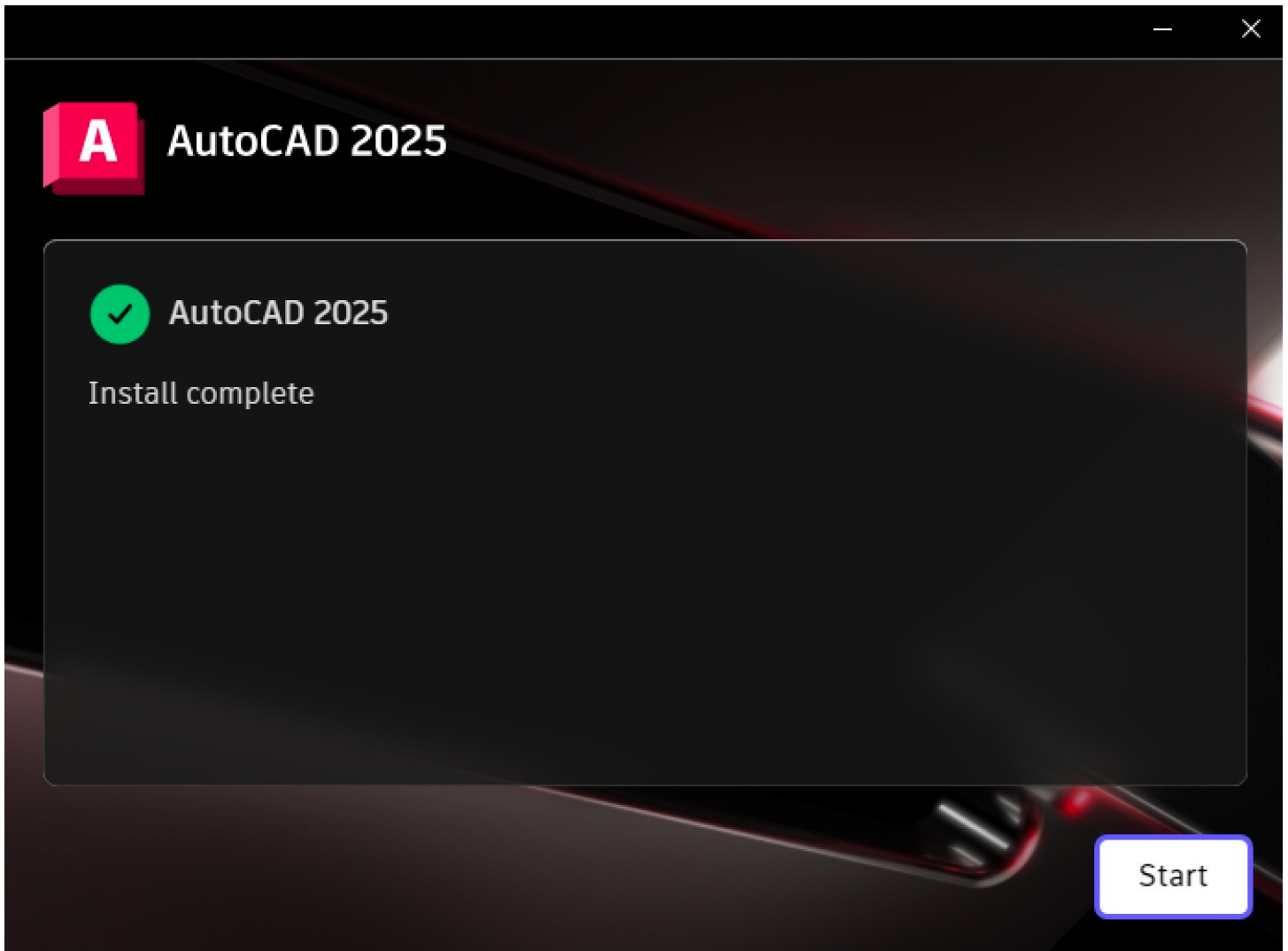
2025 Win 64 English



2. Once the file download is complete, launch the AutoCAD installer.



3. Follow the install wizard to complete installation. Once done, choose **Start** to launch AutoCAD in your WorkSpace. Sign in and begin using AutoCAD in your virtual environment.



Appendix: Additional resources

For more information about Autodesk's virtualization Policy and technical support, see [Autodesk Virtualization policy](#).

For more information about WorkSpaces, see the following:

- [Amazon WorkSpaces Personal](#)
- [Amazon WorkSpaces pricing](#)
- [Amazon WorkSpaces Client Download](#)
- [Manage the running mode in WorkSpaces Personal](#)
- [Cost Optimizer for Amazon WorkSpaces](#)
- [Amazon WorkSpaces resources](#)