



# Cloud IaaS and Data Center Workload Analysis

Begin your workload migration to AWS by starting with a complete understanding of your current infrastructure

Start your move to Amazon Web Services (AWS) by obtaining all the tools you need to analyze, construct, and get your migrations underway. Beginning the process with workload analysis provides not only a picture of workload interdependencies, but the benefit of understanding the interconnected network traffic between the different workloads as well. CloudScape by RISC Networks will provide you with that complete picture of your environment.

It's as simple as dragging and dropping workloads to construct your move groups and then filter, drill down, and refine the results. After the work groups are finalized, you can export those plans to AWS. The result is faster planning, and successful migrations!

## Product Details

### Group Level I/O Stacking and Price Modeling

---

Allows IT planners to analyze physical and virtual machine performance usage across a variety of criteria.

- Stack physical and virtual servers to create a performance profile for planning an AWS migration
- Plan maximum I/O for private cloud, hybrid and data center projects

### Components of Cloud IaaS and Data Center Workload Analysis

---

- Group Level I/O Stacking and Price Modeling
- Advanced Dependency Visualization
- Cloud Network Impact Analysis
- Workload Move Group Construction
- Workload Move Group Export

### Advanced Dependency Visualization

---

Before you can move workloads and applications to AWS, it is important to understand the interconnected network traffic between the workloads

- Discover the relationship between servers and applications across the IT environment
- Identify and build an application centric visualization automatically

## Cloud Network Impact Analysis

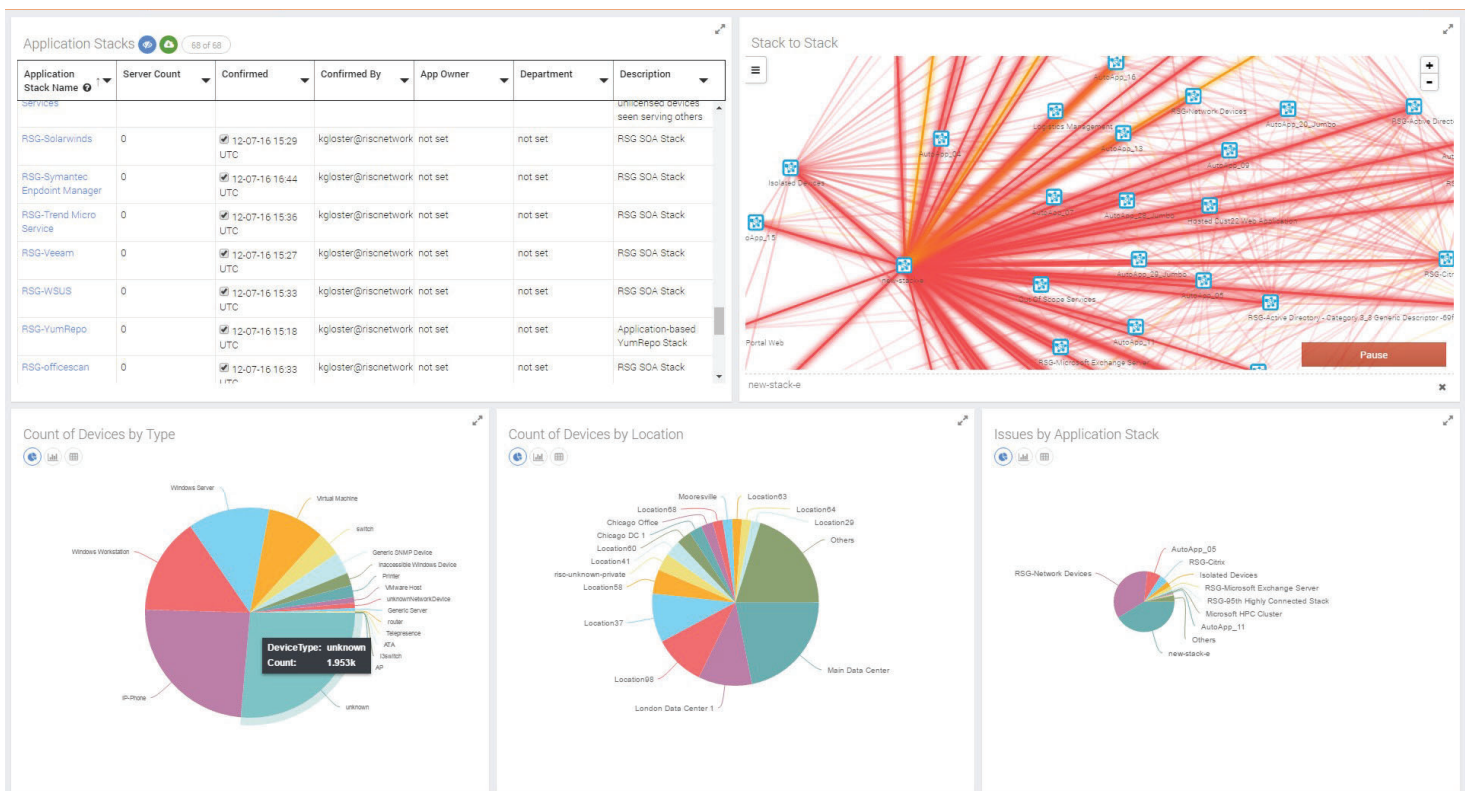
CloudScape analysis determines which protocols, how much of each protocol, and the location of the traffic between dependent servers and applications, unlike socket-based dependency mapping tools.

- Prevents costly mistakes by knowing the workload and application interdependencies
- Helps IT planners build network capacity to support data center and IaaS migrations

## Workload Move Group Construction

CloudScape's analysis assists in the process of building efficient move plans and groups, an otherwise time consuming process of migration

- Improve the construction of workload move group
- Identify network connectivity across dependent workloads in a move group



## Benefits of the Cloud IaaS and Data Center Workload Analysis

- Gain a better understanding of the potential impact on the network for every workload you migrate
- Understand the complete picture of dependencies and receive a full performance profile of each workload
- Simplify group exportation for faster workload migrations
- Construct workload move groups easily for data center or IaaS migrations
- Stack physical and virtual server performance to gain improved workload monitoring.

## About Amazon Web Services

---

For 10 years, Amazon Web Services has been the world's most comprehensive and broadly adopted cloud platform. AWS offers over 90 fully featured services for compute, storage, databases, analytics, mobile, Internet of Things (IoT) and enterprise applications from 42 Availability Zones (AZs) across 16 geographic regions in the U.S., Australia, Brazil, Canada, China, Germany, India, Ireland, Japan, Korea, Singapore, and the UK. AWS services are trusted by millions of active customers around the world monthly -- including the fastest growing startups, largest enterprises, and leading government agencies -- to power their infrastructure, make them more agile, and lower costs. To learn more about AWS, visit <https://aws.amazon.com>.

## About RISC Networks

---

RISC Networks' vision is to unlock business potential by delivering more meaningful data analysis, information that helps guide IT leaders in solving their problems and software solutions that help IT teams prepare for change and to take immediate action. RISC Networks is the industry's leader in cloud, data center and network operations analytics with more than 6,500 analytics engagements and over 80 industry leading partners. RISC Networks is a privately held company that was founded in 2007. The Company is headquartered in Asheville, NC.

**To learn more about RISC Networks Cloudscape, visit AWS Marketplace.**